



# INSTRUCTION BULLETIN

No. 9007156  
Machine: M30  
Published: 07-2010  
Rev. 00

**NOTE: DO NOT DISCARD the Parts List from the Instruction Bulletin. Place the Parts List in the appropriate place in the machine manual for future reference. Retaining the Parts List will make it easier to reorder individual parts and will save the cost of ordering an entire kit.**

*NOTE: Numbers in parenthesis ( ) are reference numbers for parts listed in Bill of Materials.*

Installation instructions for **kit number 9007155**

## SYNOPSIS:

This kit contains the parts needed to rework the main harness on the M30 machine.  
Please follow step-by-step instructions.

## SPECIAL TOOLS / CONSIDERATIONS: NONE

(Estimated time to complete: 1/2 hour)

## PREPARATION:

1. Park the machine on a clean level surface, turn off the machine, remove the key, and set the parking brake.

**FOR SAFETY: Before leaving or servicing machine, stop on level surface, turn off machine, and remove key.**

2. Open the front shroud and the engine cover.
3. Disconnect the battery cables from the battery.



**WARNING: Always disconnect battery cables from machine before working on electrical components.**

## INSTALLATION:

1. Disconnect the main wire harness from the hydraulic pressure sensor located at PT on the hydraulic solenoid valve. Refer to Fig. 1.
2. Cut the hydraulic pressure sensor connector from the main wire harness. Discard the connector. Refer to Fig. 1.
3. Heat a section of heat shrink (4) over the end of the BLACK-WHITE 131C wire.
4. Fold the BLACK-WHITE 131C wire back against the main harness.

5. Slide a section of heat shrink (4) onto the 185 GREEN wire and 14N YELLOW wire.
6. Use a 12GA splice connector (3) to connect the 185 GREEN wire and 14N YELLOW wire to the harness assembly (2). Refer to Fig. 1 and Fig. 2.

*NOTE: Wire polarity is not critical for the 185 GREEN wire and 14N YELLOW wire when they are connected to the harness assembly (2).*

7. Heat the sections of heat shrink (4) over the two connections made in the previous step.
8. Connect the 2.5K resistor (1) to the harness assembly (2). Refer to Fig. 1 and Fig. 2.
9. Use a wire tie to secure the resistor (1) / harness assembly (2) to the main harness.
10. Reconnect the battery cables to the battery.
11. Insert key into ignition and turn the ignition to the on position without starting the machine.
12. Observe the instrument panel display to confirm **MAKO III** is displayed on the instrument panel display.

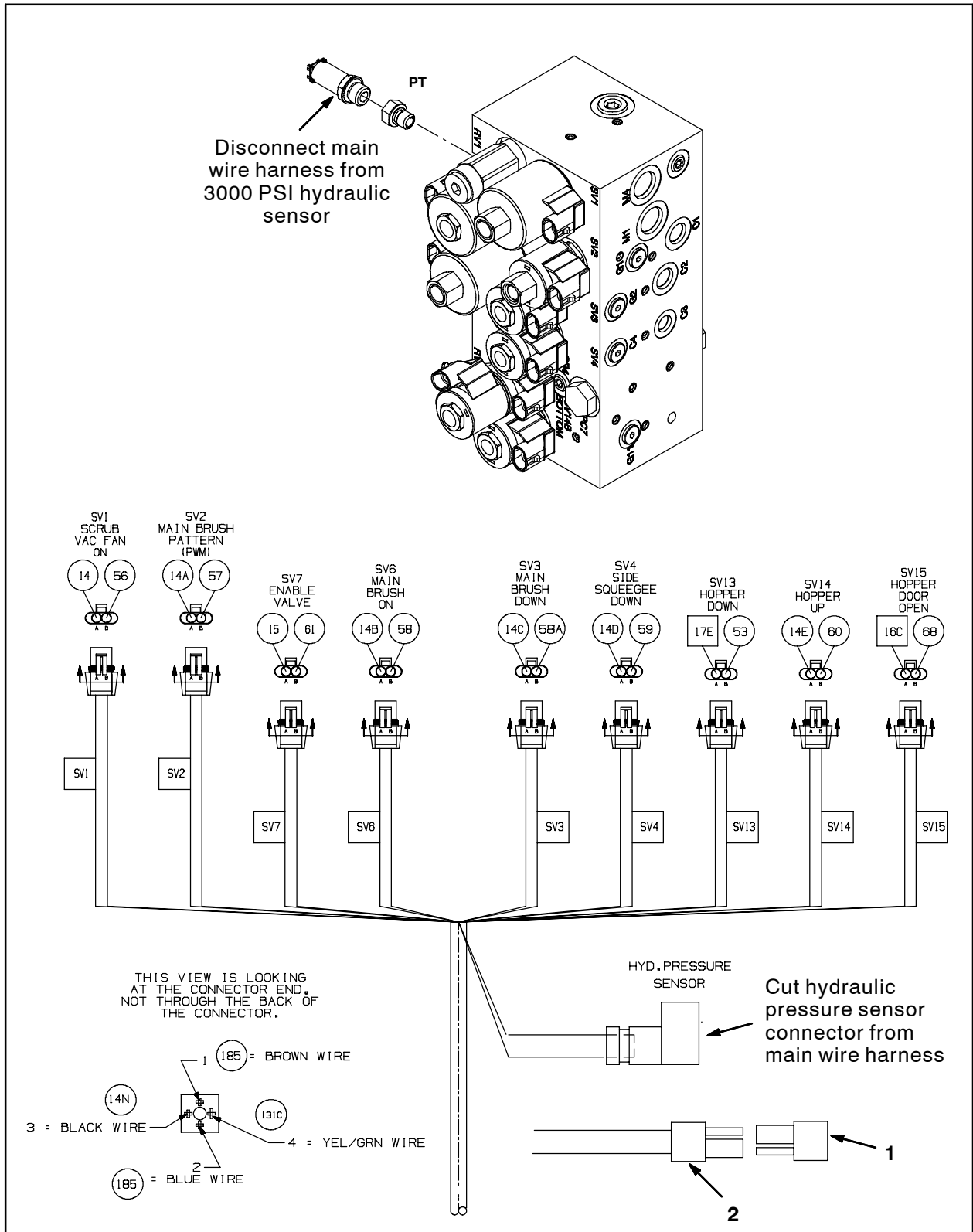


FIG. 1

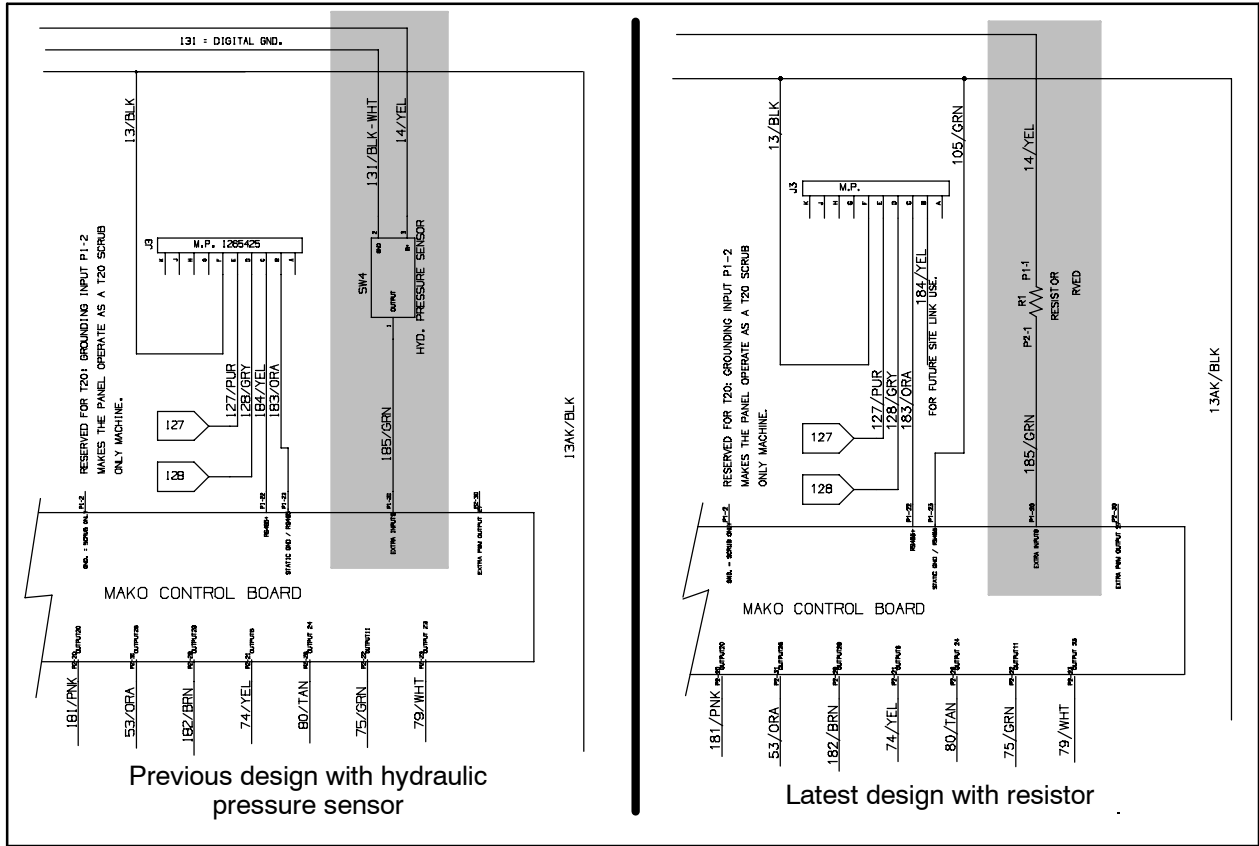


FIG. 2

Bill Of Materials For Resistor Kit, Plug, CI [M30] - 9007155

Ref.	Tennant Part No.	Description	Qty.
▽	9007155	Resistor Kit, Plug, CI [M30]	1
▲	1 1058988	Resistor, Ele, Plug [2.5K , 1W]	1
▲	2 370156	Harness, Switch, Key, Diode [515]	1
▲	3 60455	Connector, Splice [12GA]	2
▲	4 41755	Sleeve, Heatshrink, 0.25ID, 01.5L	3
▲	5 33812	Fitting, Hyd, Plug, OM04	1

TENNANT COMPANY  
P. O. Box 1452  
Minneapolis, MN 55440-1452